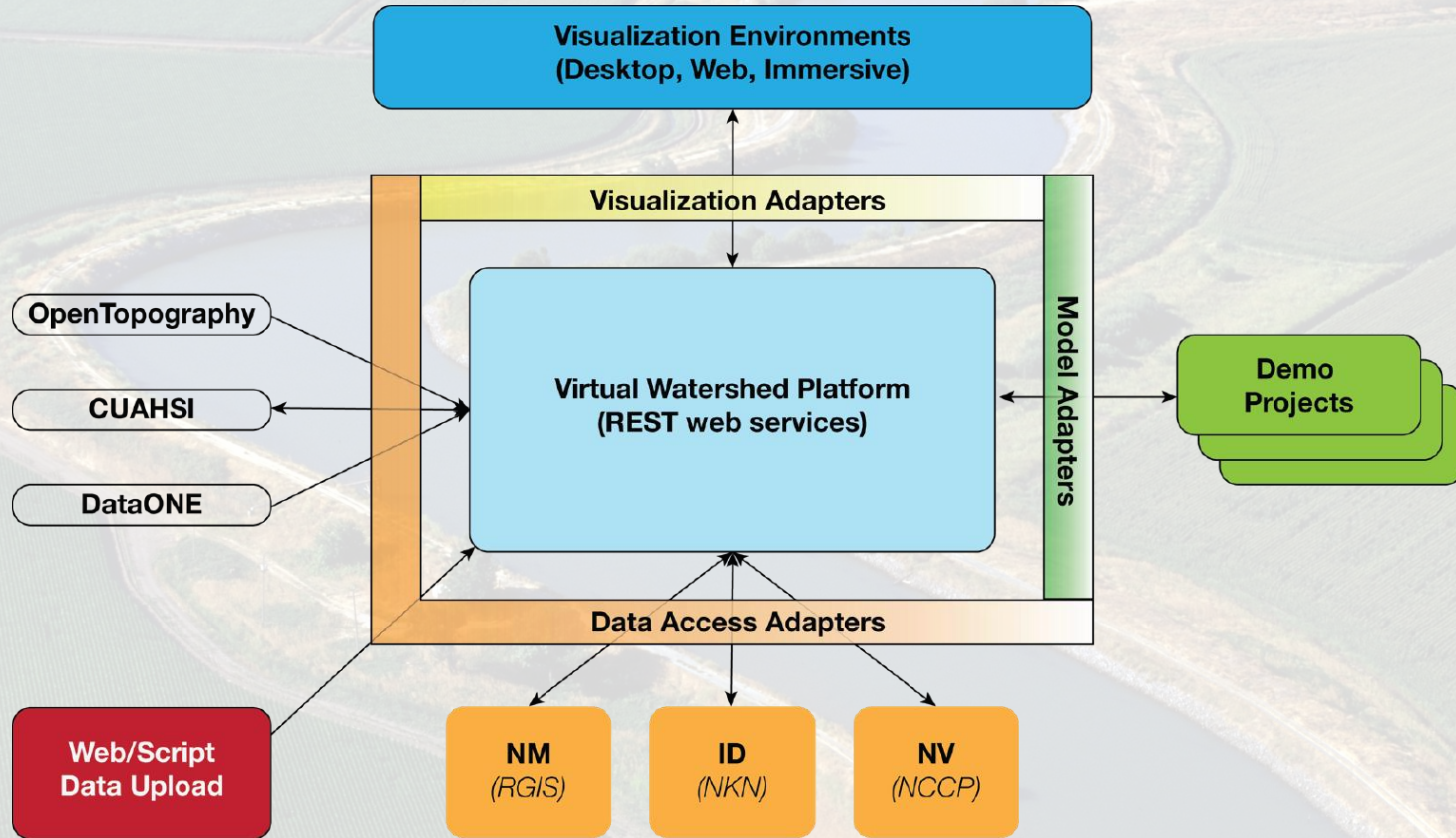


Karl Benedict  
 Director of Research Data Services,  
 College of University Libraries and Learning Sciences. UNM





**F. Achete-Minikowski, M. van der Wegen,**  
**B. Jaffe** (*L. Lucas presenting*)

UNESCO-IHE  
Institute for Water Education

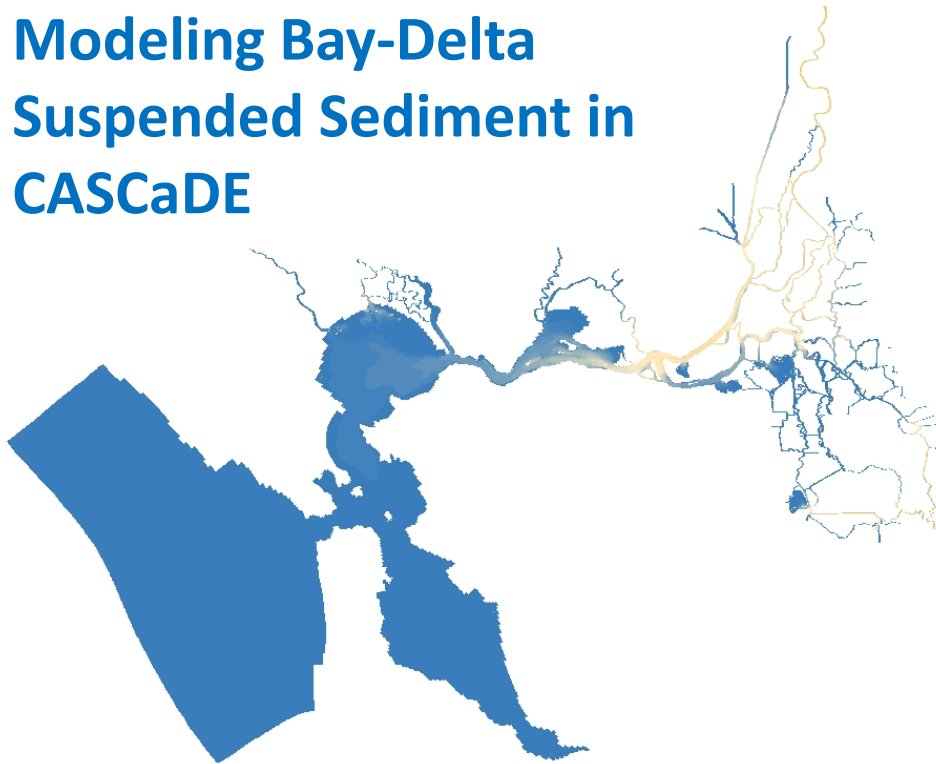


Deltares  
Enabling Delta Life



USGS

## Modeling Bay-Delta Suspended Sediment in CASCaDE



- 2D, Flexible Mesh
- WY 2011
- 2 sediment fractions (mud, sand)
- Delta operations important:
  - ✓ *Delta Cross Channel*
  - ✓ *South Delta pumps*
- See: Achete et al., In Review at:  
<http://www.hydrol-earth-syst-sci-discuss.net/12/1507/2015/hessd-12-1507-2015-discussion.html>



DELTA STEWARDSHIP COUNCIL



UC DAVIS  
CENTER FOR WATERSHED SCIENCES



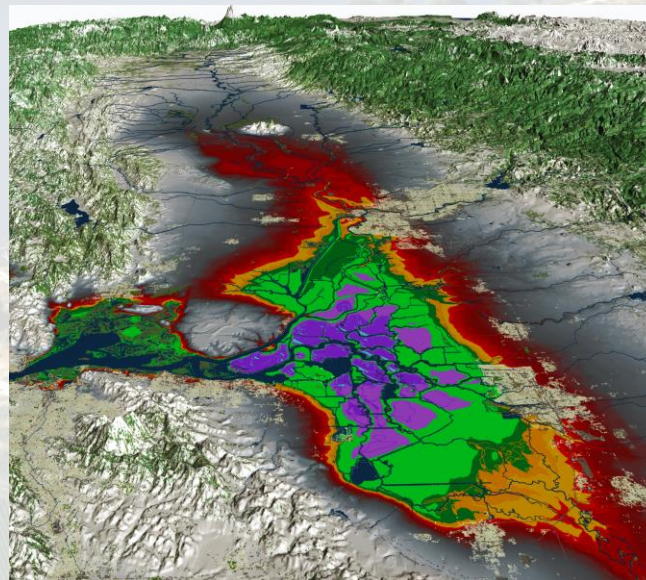


DAVID OSTI, 34 NORTH



## Using OPENNRM : Tell your Data Story

Baydeltalive.com and San Joaquin Real Time Management collaborative resource management web applications and workspaces for data collection, analysis and visualization.



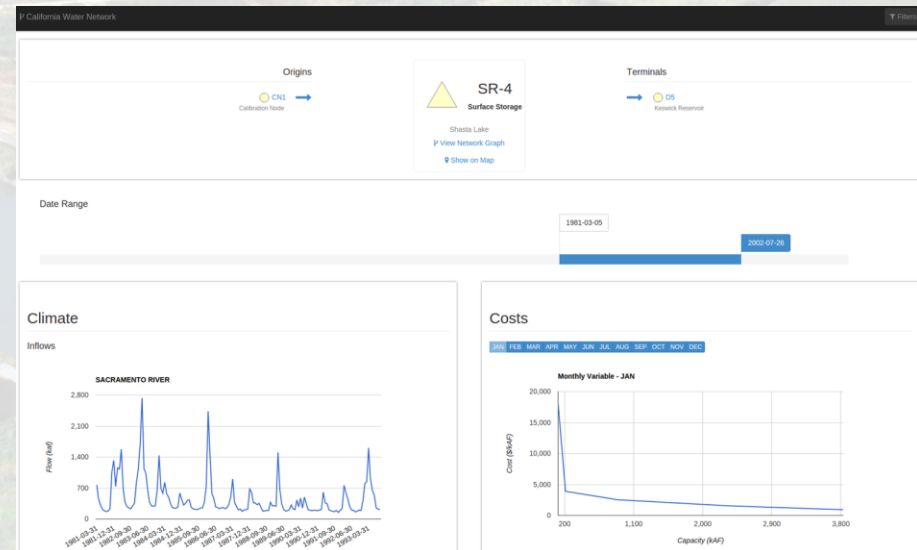
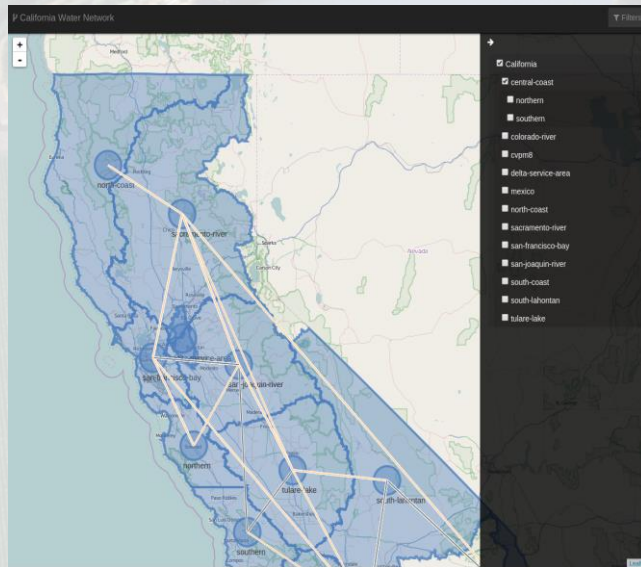


# Quinn Hart



# HOBBS

Visualizing ♦ Standardizing ♦ Sharing  
California's Water Conveyance System





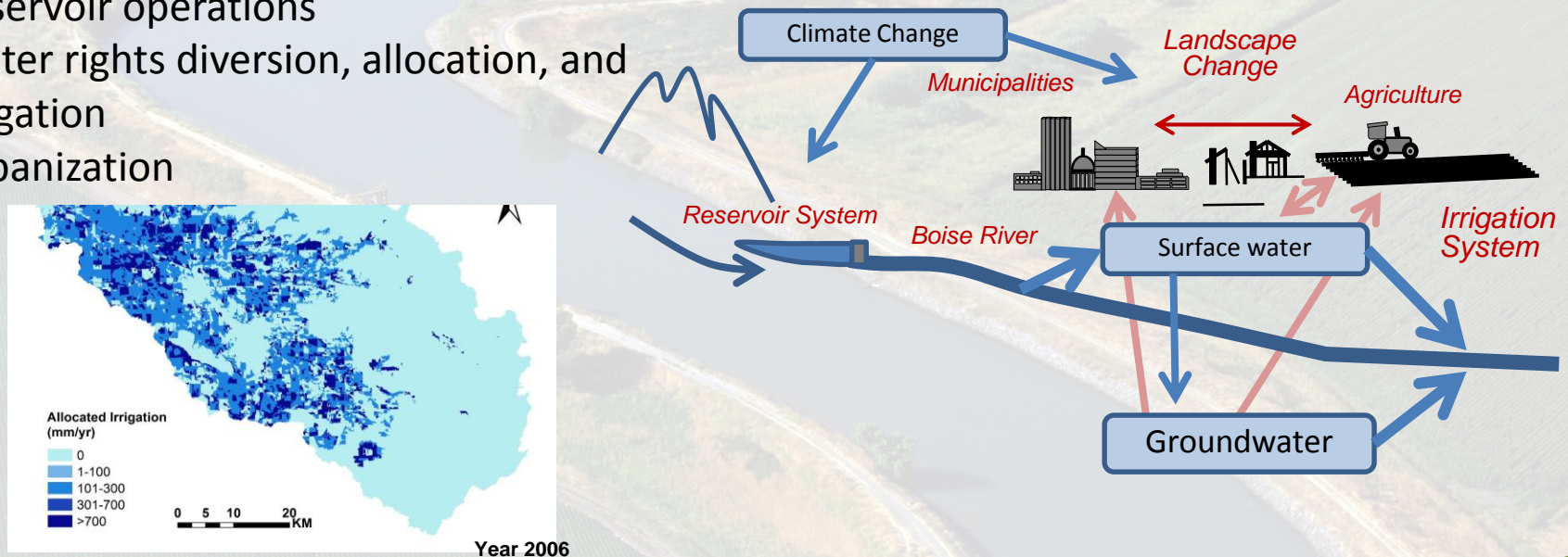
Lejo Flores  
Boise State University & Idaho EPSCoR



## Integrated modeling of coupled human-natural systems

- Envision framework (Oregon State)
- Upland hydrology and land management practices
- Reservoir operations
- Water rights diversion, allocation, and irrigation
- Urbanization

### Conceptual Model







**EFT**  
Ecological Flows Tool

© The Nature Conservancy

# Multi-species ecological flow optimization using flexible ecosystem objectives

Ryan Luster



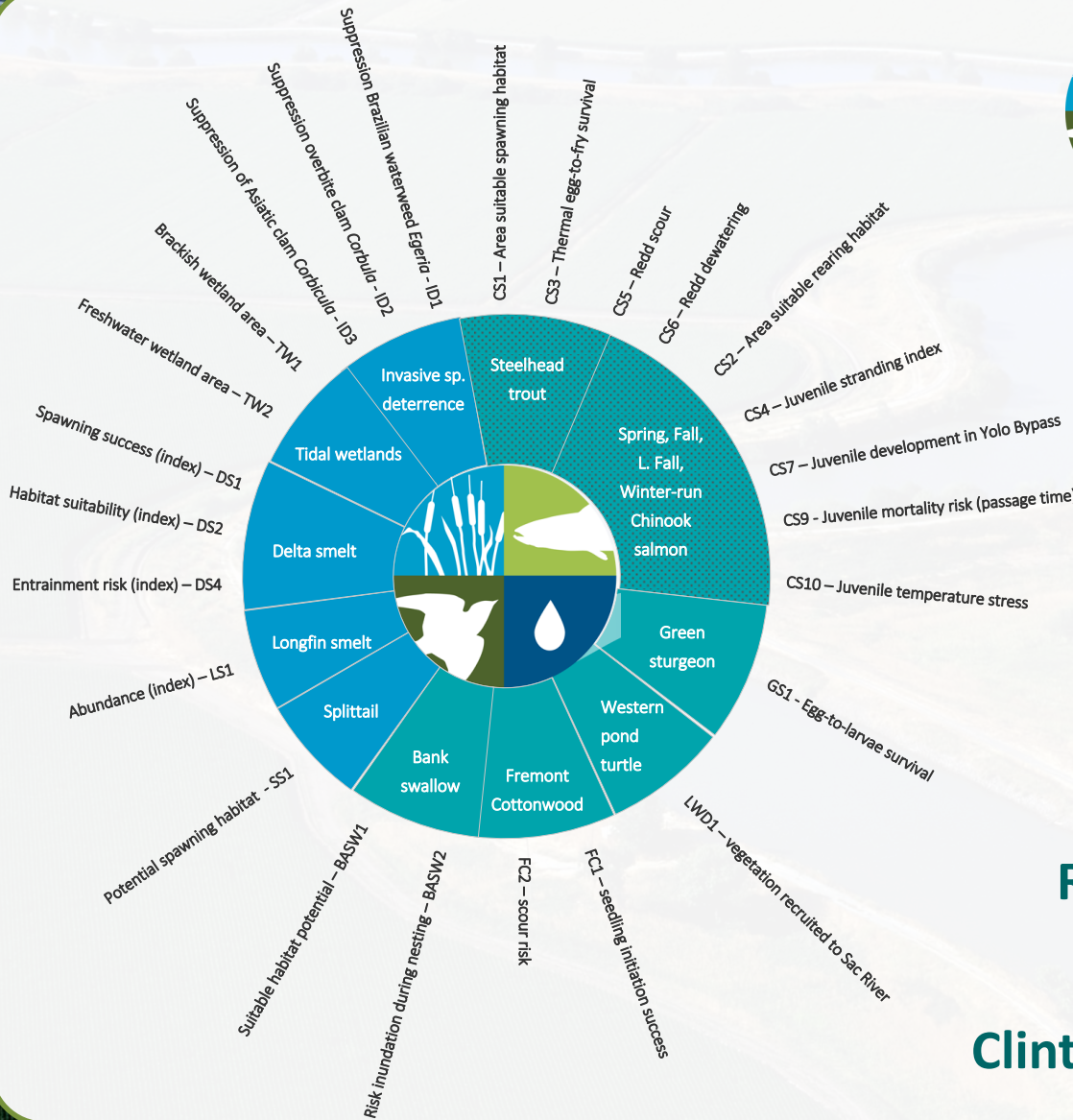
Protecting nature. Preserving life.™

Clint Alexander



ESSA

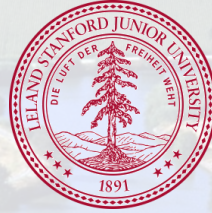
35 YEARS



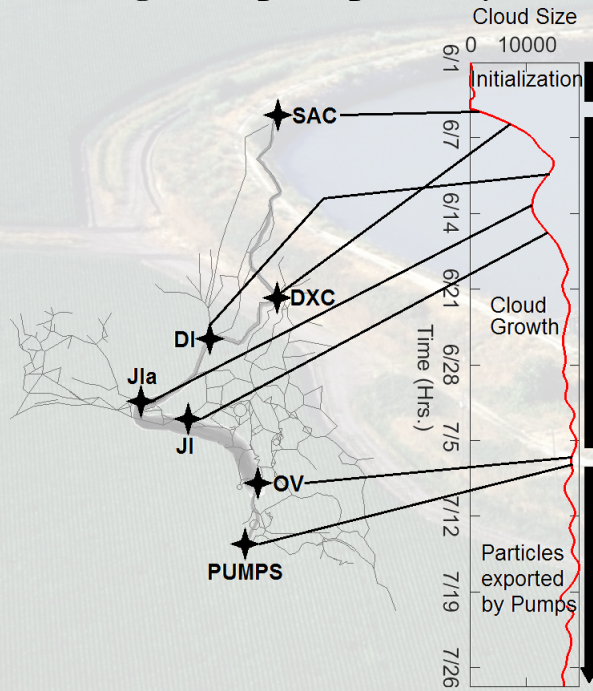


# INVESTIGATION OF MASSIVE DISPERSION IN THE SACRAMENTO – SAN JOAQUIN DELTA DUE TO JUNCTIONS

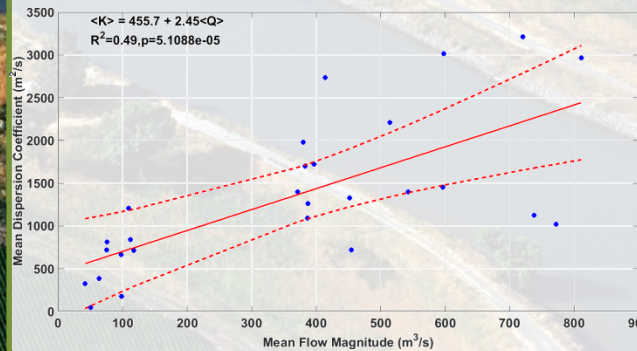
Vamsi Krishna Sridharan



- DSM – 2 HYDRO and F – PTM dispersion study along transport pathways



- Dispersion correlates reasonably with River flow along pathways
- Large variability in results indicates spatial variability along pathways
- Different dispersion mechanisms exist



- Dispersion scales with cloud size and mean advective velocity of cloud

